



# fitbit zip

Wireless Activity Tracker



User Manual  
Version 1.1

# Table of Contents

<b>Getting Started</b> .....	<b>1</b>
What's you'll find in this box.....	1
What's in this document.....	1
Inserting the battery .....	2
<b>Setting up your Fitbit Zip</b> .....	<b>3</b>
Setting up your tracker on your mobile device .....	3
Setting up your tracker on your PC (Windows 10 only).....	3
Setting up your tracker on your PC (Windows 8.1 and below).....	4
Setting up your tracker on your Mac .....	4
Syncing your tracker data to your Fitbit account.....	5
<b>Getting to know your Fitbit Zip</b> .....	<b>6</b>
Placement .....	6
Battery life .....	6
Determining your current battery level.....	7
Memory .....	7
<b>Tracking with Fitbit Zip</b> .....	<b>8</b>
<b>Fitbit Zip General Info &amp; Specifications</b> .....	<b>9</b>
Battery .....	9
Size and weight.....	9
Environmental conditions .....	9
Help.....	9
Return policy and warranty.....	9
<b>Updating Fitbit Zip</b> .....	<b>10</b>
<b>Troubleshooting your Fitbit Zip</b> .....	<b>11</b>
<b>Return Policy and Warranty</b> .....	<b>12</b>
<b>Regulatory and Safety Notices</b> .....	<b>13</b>
USA: Federal Communications Commission (FCC) statement.....	13
Canada: Industry Canada (IC) statement .....	13
European Union (EU).....	14
Australia .....	15
China .....	15
Wireless sync dongle.....	15

Zip ..... 16  
Israel ..... 16  
Mexico ..... 16  
Serbia ..... 16  
Singapore ..... 17  
South Africa..... 17  
South Korea..... 18  
United Arab Emirates ..... 18  
Safety statement ..... 19  
Important safety instructions ..... 19  
Battery precautions..... 19  
Disposal and recycling information ..... 20

# Getting Started

---

Welcome to the Fitbit Zip™ Wireless Activity Tracker.

## What's you'll find in this box

Your Fitbit Zip box includes:

1. Fitbit Zip Wireless Activity Tracker
2. Clip
3. Battery door tool
4. Wireless sync dongle
5. 3V coin battery, CR2025



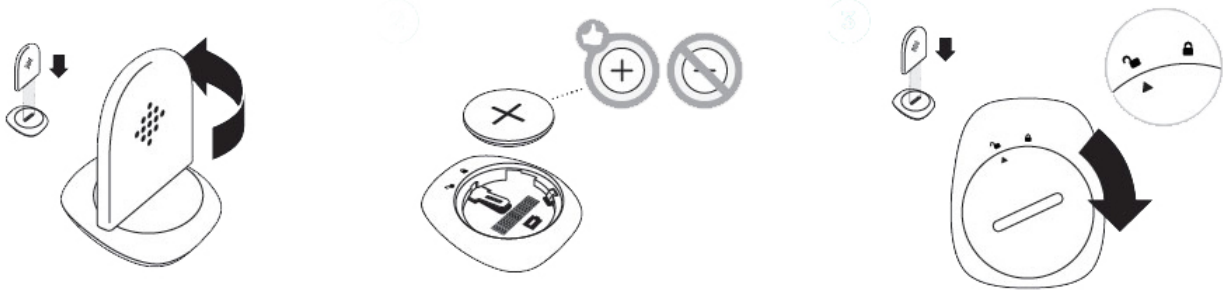
## What's in this document

We get you started quickly by creating a Fitbit® account and making sure the tracker can synchronize the data it collects with your Fitbit dashboard. The dashboard is where you can analyze your data, see historical trends, set goals, log food and water, keep up with friends, and much more. As soon as you're done setting up your tracker, you're ready to start moving.

Next, we explain how to find and use the features that interest you and adjust your preferences. To find more information, tips, and troubleshooting, please browse our comprehensive articles at <http://help.fitbit.com>.

## Inserting the battery

1. Remove your Zip from its packaging and then use the battery door tool to unlock the battery door. Insert the tool into the slot on the back of the unit, and turn the door counterclockwise to remove it.
2. Once the door has been removed, insert the provided battery into the back of the unit, with the “+” sign facing up. The battery will rest in the center of the compartment.
3. Once the battery is in place, align the arrow on the battery door with the ‘unlock’ icon on your Zip to put the battery door in place. Use the battery door tool to ‘lock’ the battery door by turning it clockwise until the arrow on the door lines up with the ‘lock’ icon.



4. Once the display comes on, you will be ready to proceed with setup. The device version of your Zip will appear on the display, followed by a series of smiley faces, which are used to represent your activity level. The display will remain on for 30 minutes after inserting the battery.
5. Take the wireless sync dongle from the box and plug it into a USB port on your computer.
6. You are now ready to get started with setup.

# Setting up your Fitbit Zip

---

To make the most of your Zip, use the free Fitbit app available for iOS®, Android™, and Windows® 10 mobile devices. If you don't have a compatible mobile device, you can use a computer and fitbit.com instead.

## Setting up your tracker on your mobile device

The Fitbit app is compatible with more than 200 mobile devices that support iOS, Android, and Windows 10 operating systems.

To get started:

1. Make sure the Fitbit app is compatible with your mobile device by checking <http://www.fitbit.com/devices>.
2. Find the Fitbit app in one of these locations, depending on your device:
  - The Apple® App Store® for iOS devices such as an iPhone® or iPad®.
  - The Google Play™ Store for Android devices such as the Samsung® Galaxy® S5 and Motorola Droid Turbo.
  - The Microsoft® Windows Store for Windows 10 mobile such as the Lumia™ phone or Surface™ tablet.
3. Install the app. Note that you'll need an account with the applicable store before you can download even a free app such as Fitbit.
4. When the app is installed, open it and tap **Join Fitbit** to get started. You'll be guided through the process of creating a Fitbit account and connecting (pairing) your Zip to your mobile device. Pairing makes sure the tracker and mobile device can communicate with one another (sync their data).

Note that the personal information you're asked during setup is used to calculate your basal metabolic rate (BMR), which helps determine your estimated calorie expenditure. This information is private unless you go into your Privacy settings and opt to share age, height, or weight with Fitbit friends.

After setup you're ready to get moving.

## Setting up your tracker on your PC (Windows 10 only)

If you don't have a mobile device, you can set up and sync your tracker on your Windows 10 PC using the same Fitbit app available for Windows mobile devices.

To get the app, click the Start button and open the Windows Store (called Store). Search for "Fitbit app." Note that if you've never downloaded an app from the store to your computer, you'll be prompted to create an account.

Open the app and follow the instructions to create a Fitbit account and set up your Zip. You can set up and sync wirelessly if your computer has Bluetooth®, otherwise you'll need to use the wireless sync dongle that came in the box with your Fitbit Zip.

## Setting up your tracker on your PC (Windows 8.1 and below)

If you don't have a compatible mobile device, you can set up your tracker with a computer and see your Fitbit stats on fitbit.com. To use this setup method you'll first install a free software application called Fitbit Connect that lets Zip sync its data with your fitbit.com dashboard.

To install Fitbit Connect and set up your tracker:

1. Go to <http://www.fitbit.com/setup>.
2. Scroll down and click the option to download.
3. When prompted, save the file that appears.
4. Double-click the file (FitbitConnect\_Win.exe). The Fitbit Connect installer opens.
5. Click **Continue** to move through the installer.
6. When prompted, choose **Set up a New Fitbit Device**.
7. Follow the onscreen instructions to create a Fitbit account and connect your Zip. If your computer has Bluetooth, setup can take place wirelessly. If not you'll be prompted to plug in the wireless sync dongle that came in the box with your Fitbit Zip.

Note that the personal information you're asked during setup is used to calculate your basal metabolic rate (BMR), which helps determine your estimated calorie expenditure. This information is private unless you go into your Privacy settings and opt to share age, height, or weight with Fitbit friends.

## Setting up your tracker on your Mac

If you don't have a compatible mobile device, you can set up your tracker with a computer and see your Fitbit stats on fitbit.com. To use this setup method you'll first install a free software application called Fitbit Connect that lets Zip sync its data with your fitbit.com dashboard.

To install Fitbit Connect and set up your tracker:

1. Go to <http://www.fitbit.com/setup>.
2. Scroll down and click the option to download.
3. When prompted, save the file that appears.
4. Double-click the file (Install Fitbit Connect.pkg). The Fitbit Connect installer opens.
5. Click **Continue** to move through the installer.
6. When prompted, choose **Set up a New Fitbit Device**.
7. Follow the onscreen instructions to create a Fitbit account and connect your Zip.

Note that the personal information you're asked during setup is used to calculate your basal metabolic rate (BMR), which helps determine your estimated calorie expenditure. This information is private unless you go into your Privacy settings and opt to share age, height, or weight with Fitbit friends.

## Syncing your tracker data to your Fitbit account

Once you've set up and started using Zip, you'll need to make sure it regularly transfers (syncs) its data to Fitbit so you can track your progress, see your exercise history, earn badges, analyze your sleep logs, and more on your Fitbit dashboard. A daily sync is recommended but not required.

The Fitbit apps use Bluetooth Low Energy (BLE) technology to sync with your Fitbit tracker. Each time you open the app it will sync if the tracker is nearby, and the app will also sync periodically throughout the day if you have the all-day sync setting enabled. If you're running the Fitbit app on a Windows 10 PC that doesn't have Bluetooth, you'll need to make sure the tracker is connected to the computer.

Fitbit Connect on a Mac® also uses Bluetooth for syncing (if available), otherwise you'll need to make sure your wireless sync dongle is plugged into the computer. Fitbit Connect on a PC requires that you plug in your wireless sync dongle. You can force Fitbit Connect to sync at any time or it will happen automatically every 15 minutes if:

- The tracker is within 15-20 feet of your computer and has new data to upload (meaning if you haven't moved, an automatic sync won't occur).
- The computer is powered on, awake, and connected to the Internet.



# Getting to know your Fitbit Zip

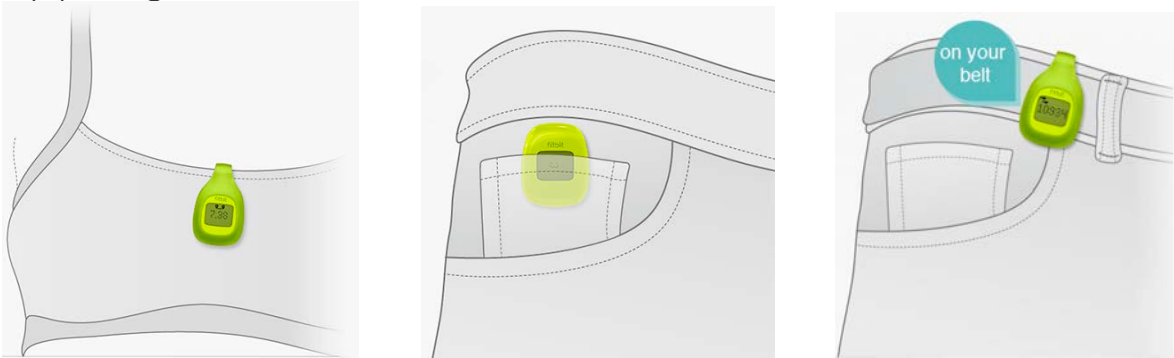
---

This section tells you how best to wear and recharge your tracker.

## Placement

Zip is most accurate when worn on or very close to the body. Ideal places to wear your Zip include a shirt pocket, bra, pants pocket, belt, or waistband. Try out a few different locations to see what is most comfortable and secure for you.

A clip designed to keep your tracker clipped to your clothing is provided with your Zip package.



The Zip is not designed to be worn in direct contact with the skin. Always use the silicone holder when clipping it to a bra or waistband, with the display facing outward. Do not wear the Zip inside your bra.

Some users may experience skin irritation even when wearing the Zip as instructed on the bra or waistband. If this occurs we recommend clipping it on your pocket, belt, or other external piece of clothing.

The Zip is sweat, rain, and splash resistant, but not waterproof. It is not intended to be worn swimming.

## Battery life

With normal use, your Zip's battery should last up to 6 months.

A battery icon will appear on your Zip display when the battery has drained to 25%. A flashing battery icon indicates that your Zip is very close to being drained. Data could be lost if your Zip is not synced before replacing the battery.

If your Zip battery drains, purchase a new 3V coin battery, CR2025. Use the provided battery door tool to unlock the battery door compartment, located on the back of the Zip.

## Determining your current battery level

You can check your battery's level by logging into your dashboard and clicking on your photo and name. The battery level recorded during your most recent sync will be listed to the right of the picture of your Zip. You can also check your battery level from the Fitbit apps.

## Memory

Your Zip stores minute-by-minute data for 7 days and daily totals for 30 days.

When you sync your Zip, its data is uploaded to your fitbit.com dashboard and securely stored on Fitbit's servers. As long as you sync your Zip within thirty days of activity, you will be able to transmit that data to your fitbit.com dashboard.

---

**NOTE:** Every night at midnight, your Zip will reset itself. This means your goal progress and daily data will begin at zero again. This does not delete the data stored on your tracker. That data will be uploaded to your fitbit.com dashboard the next time you sync your Zip.

The time this reset occurs is based on the time zone set on your fitbit.com profile.

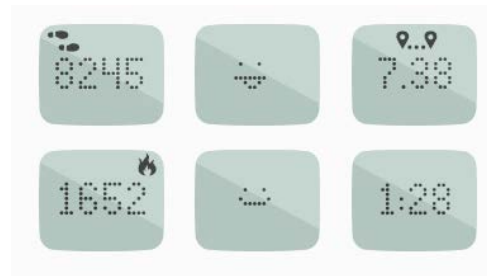
---

# Tracking with Fitbit Zip

---

Zip will track and display the following:

- Steps taken
- Calories burned
- Distance traveled
- A clock
- The Fitbit Smiley, which highlights your recent activity level



To conserve battery life, your Zip sleeps during periods of inactivity. Zip will go to sleep after approximately 20 seconds if no steps are recorded. Once your Zip is asleep, its display will remain off until moved.

# Fitbit Zip General Info & Specifications

---

## Battery

Your Zip runs on a replaceable 3V coin battery, CR2025.

## Size and weight

- Height: 1.5 inches (35.6 mm)
- Width: 1.1 inches (28.9 mm)
- Depth: 0.38 inch (9.6 mm)
- Weight: 0.282 (0.018 lb., 8 grams)



## Environmental conditions

- Zip is not waterproof. It should not be worn while swimming. Zip is splash, rain and sweat proof.
- Operating temperature: 32° to 104° F (0° to 40° C)
- Non-operating temperature: -0° to 130° F (-17.7° to 54.4° C)
- Relative Humidity: The device should not be submerged in more than 1 meter of water for any amount of time.
- Maximum operating altitude: 30,000 feet (9,144 m)
- Non-operating temperature: -0° to 130° F (-17.7° to 54.4° C)

## Help

Troubleshooting and assistance for your Zip can be found at <http://help.fitbit.com>.

## Return policy and warranty

Warranty information and the fitbit.com Store Return Policy can be found online at <http://www.fitbit.com/returns>.

# Updating Fitbit Zip

---

Free feature enhancements and product improvements are occasionally made available through firmware updates provided through Fitbit Connect or the Fitbit app. We recommend keeping your Zip up to date.

To update your Fitbit Zip using Fitbit Connect:

1. Make sure your wireless sync dongle is plugged in and your tracker is nearby.
2. Click the Fitbit Connect icon near the time on your computer.
3. Click **Open Main Menu**, and choose **Check for device update**.
4. **Log in** to your account and tap your Zip a few times to wake it up. Give Fitbit Connect a moment to look for your Zip.

If an update is found, Fitbit Connect will begin downloading and installing the update. A progress bar appears on your computer screen while the update is in progress. Keep your tracker close to your computer while it updates.

Fitbit Connect shows a confirmation screen when the update is complete and your tracker will restart.

# Troubleshooting your Fitbit Zip

---

If your tracker is not working properly, review our troubleshooting information below. For other problems or more details, visit <http://help.fitbit.com>.

If you experience one of the following problems, it may be fixed by restarting your tracker:

- Not syncing
- Not responding to taps
- Unresponsive despite being charged
- Not tracking your steps or other data

---

**Note:** Restarting your tracker as described below reboots the device. Note that restarting your tracker does not delete any data.

---

To restart your tracker:

1. Open the battery door using the battery door tool and remove the battery.
2. Wait 10 seconds.
3. Place the battery back into the tracker with the “+” side facing up, and close the door.

Your Zip should now be restarted. You will see your tracker’s version number, followed by a series of Fitbit Smilies. When you tap your tracker, it should work normally.

For additional troubleshooting or to contact Customer Support, see <http://help.fitbit.com>.

# Return Policy and Warranty

---

Warranty information and the fitbit.com Store Return Policy can be found online at <http://www.fitbit.com/returns>.

# Regulatory and Safety Notices

---

Model Name: FB301

## USA: Federal Communications Commission (FCC) statement

This device complies with FCC part 15 FCC Rules.  
Operation is subject to the following two conditions:

1. This device may not cause harmful interference and
2. This device must accept any interference, including interference that may cause undesired operation of the device.

### FCC Warning

Changes or modifications not expressly approved by the party responsible for compliance could void the user's authority to operate the equipment.

Note: This equipment has been tested and found to comply with the limits for a Class B digital device, pursuant to part 15 of the FCC Rules. These limits are designed to provide reasonable protection against harmful interference in a residential installation. This equipment generates, uses and can radiate radio frequency energy and, if not installed and used in accordance with the instructions, may cause harmful interference to radio communications. However, there is no guarantee that interference will not occur in a particular installation. If this equipment does cause harmful interference to radio or television reception, which can be determined by turning the equipment off and on, the user is encouraged to try to correct the interference by one or more of the following measures:

- Reorient or relocate the receiving antenna.
- Increase the separation between the equipment and receiver.
- Connect the equipment into an outlet on a circuit different from that to which the receiver is connected.
- Consult the dealer or an experienced radio/TV technician for help.

This device meets the FCC and IC requirements for RF exposure in public or uncontrolled environments.

## Canada: Industry Canada (IC) statement

IC Notice to Users English/French in accordance with RSS GEN Issue 3:

This device complies with Industry Canada license exempt RSS standard(s).  
Operation is subject to the following two conditions:

1. this device may not cause interference, and
2. this device must accept any interference, including interference that may cause undesired operation of the device.

Cet appareil est conforme avec Industrie Canada RSS standard exempts de licence (s). Son utilisation est soumise à Les deux conditions suivantes:



1. cet appareil ne peut pas provoquer d'interférences et
2. cet appareil doit accepter Toute interférence, y compris les interférences qui peuvent causer un mauvais fonctionnement du dispositif

This Class B digital apparatus complies with Canadian ICES-003.

Cet appareil numérique de la classe B est conforme à la norme NMB-003 du Canada.

FCC ID	XRAFB301
IC ID	8542A- FB301

## European Union (EU)

### Simplified EU Declaration of Conformity

Hereby, Fitbit, Inc. declares that the radio equipment type Model FB301 is in compliance with Directive 2014/53/EU. The full text of the EU declaration of conformity is available at the following internet address:

<http://www.fitbit.com/safety>.

### Déclaration UE de conformité simplifiée

Fitbit, Inc. déclare par la présente que les modèles d'appareils radio FB301 sont conformes à la Directive 2014/53/UE. Les déclarations UE de conformité sont disponibles dans leur intégralité sur le site suivant: [www.fitbit.com/safety](http://www.fitbit.com/safety).

### Dichiarazione di conformità UE semplificata

Fitbit, Inc. dichiara che il tipo di apparecchiatura radio Modello FB301 è conforme alla Direttiva 2014/53/UE. Il testo completo della dichiarazione di conformità UE è disponibile al seguente indirizzo Internet: [www.fitbit.com/safety](http://www.fitbit.com/safety).

### Vereinfachte EU-Konformitätserklärung

Fitbit, Inc. erklärt hiermit, dass die Funkgerätypen Modell FB301 die Richtlinie 2014/53/EU erfüllen. Der vollständige Wortlaut der EU-Konformitätserklärungen kann unter folgender Internetadresse abgerufen werden: [www.fitbit.com/safety](http://www.fitbit.com/safety).

## Declaración UE de Conformidad simplificada

Por la presente, Fitbit, Inc. declara que el tipo de dispositivo de radio Modelo FB301 cumple con la Directiva 2014/53/UE. El texto completo de la declaración de conformidad de la UE está disponible en la siguiente dirección de Internet: [www.fitbit.com/safety](http://www.fitbit.com/safety).



Australia



China



Wireless sync dongle

部件名称	有毒和危险品					
	铅 (Pb)	水银 (Hg)	镉 (Cd)	六价铬 (Cr(VI))	多溴化苯 (PBB)	多溴化二苯醚 (PBDE)
<b>Dongle Model FB150</b>						
表带和表扣	○	○	○	○	○	○
电子	X	○	○	○	○	○

本表格依据 SJ/T 11364 的规定编制

O: 表示该项目中涉及的所有物料, 其包含的有害物质的含量低于 GB/T 26572. 标准的限制要求.

X: 表示该项目中涉及的所有物料中至少有一种, 其包含的有害物质的含量高于 GB/T 26572. 标准的限制要求.

## Zip

部件名称	有毒和危险品					
	铅 (Pb)	水银 (Hg)	镉 (Cd)	六价铬 (Cr(VI))	多溴化苯 (PBB)	多溴化二苯醚 (PBDE)
<b>Zip Model FB301</b>						
表带和表扣	○	○	○	○	○	○
电子	X	○	○	○	○	○

本表格依据 SJ/T 11364 的规定编制

O: 表示该项目中涉及的所有物料, 其包含的有害物质的含量低于 GB/T 26572. 标准的限制要求.

X: 表示该项目中涉及的所有物料中至少有一种, 其包含的有害物质的含量高于 GB/T 26572. 标准的限制要求.

## Israel

אישור התאמה 51-37305

אין לבצע כל שינוי טכני בחלק המודולארי של המוצר.

## Mexico



IFETEL: RCPFIFB13-1798 (FB301B), RCPFIFB13-1798-A3 (FB301C), RCPFIFB13-1798-A1 (FB301G), RCPFIFB13-1798-A2 (FB301M), RCPFIFB13-1798-A4 (FB301W)

## Serbia



И005 15

Singapore



South Africa



TA-2013/745  
Approved

## South Korea

“ 해당 무선설비는 전파혼신 가능성이 있으므로 인명안전과 관련된 서비스는 할 수 없습니다.”



- 사용 주파수 (Used frequency): 2402 MHz-2480 MHz
- 채널수 (The number of channels): 40
- 공중선전계강도 (Antenna power): 1.2 dBi
- 변조방식 (Type of the modulation): Digital
- 안테나타입 (Antenna type): Vertical
- 출력 (Output power): 1.32 mW/MHz E.I.R.P.
- 안테나 종류 (Type of Antenna): PCB

### KCC approval information

- 1) Equipment name (model name) : 무선데이터통신시스템용 특정소출력무선기기 FB301
- 2) Certificate number : MSIP-CRM-XRA-FB301
- 3) Applicant : Fitbit, Inc.
- 4) Manufacture: Fitbit, Inc.
- 5) Manufacture / Country of origin: P.R.C.

## United Arab Emirates

TRA  
REGISTERED  
NO:  
ER35024/14

DEALER NO:  
DA35294/14

## Safety statement

This equipment has been tested to comply with safety certification in accordance with the specifications of EN Standard: EN60950-1:2006 + A11:2009 + A1:2010 + A12:2011, + A2:2013.

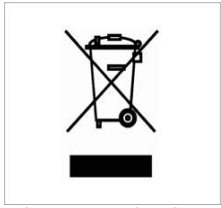
## Important safety instructions

- Read these instructions.
- Keep these instructions.
- Heed all warnings.
- Follow all instructions.
- Do not attempt to open the tracker. Substances contained in this product and/or its battery may damage the environment and/or human health if handled and disposed of improperly.
- Do not tamper with your Zip.
- Do not use abrasive cleaners to clean your Zip.
- Do not place your Zip in a Dishwasher, Washing Machine or Dryer.
- Do not expose your Zip to extremely high or low temperatures.
- Do not use your Zip in a sauna or steam room.
- Do not leave your Zip in direct sunlight for an extended period of time.
- Do not leave your Zip near open flames.
- Do not dispose of your Zip in a fire. The battery could explode.
- Do not attempt to disassemble your Zip, it does not contain serviceable components.
- Never allow children to play with the Zip; the small components may be a choking hazard!

## Battery precautions

Change the battery in accordance with the instructions supplied with this guide.

## Disposal and recycling information



The symbol on the product or its packaging signifies that this product has to be disposed separately from ordinary household wastes at its end of life. Please kindly be aware that this is your responsibility to dispose electronic equipment at recycling centers so as to help conserve natural resources. Each country in the European Union should have its collection centers for electrical and electronic equipment recycling. For information about your recycling drop off point, please contact your local related electrical and electronic equipment waste management authority or the retailer where you bought the product.

- Do not dispose of the Zip with household waste.
- Batteries are not to be disposed of in municipal waste stream and require separate collection.
- Disposal of the packaging and your Zip should be done in accordance with local regulations.

**Please recycle!**



